

EXPERIENCE ADVENTURE...

EXPERIENCE WONDER...

EXPERIENCE *Merredin*

Self - Drive Itinerary 3 Days / 2 Nights



This itinerary has been designed with a family in mind (2 Adults, 2 Children), showcasing the best hidden gems located in WA's Golden Wheatbelt.

Just a short 3-hour drive from Perth, Merredin is a dynamic destination where history, nature, and innovation comes to life. Whether you're drawn by heritage or the great outdoors, Merredin promises an unforgettable experience for all.

Central Wheatbelt Visitor Centre

📍 45 Barrack Street, Merredin
☎ (08) 9041 1666
✉ visitor@merredin.wa.gov.au

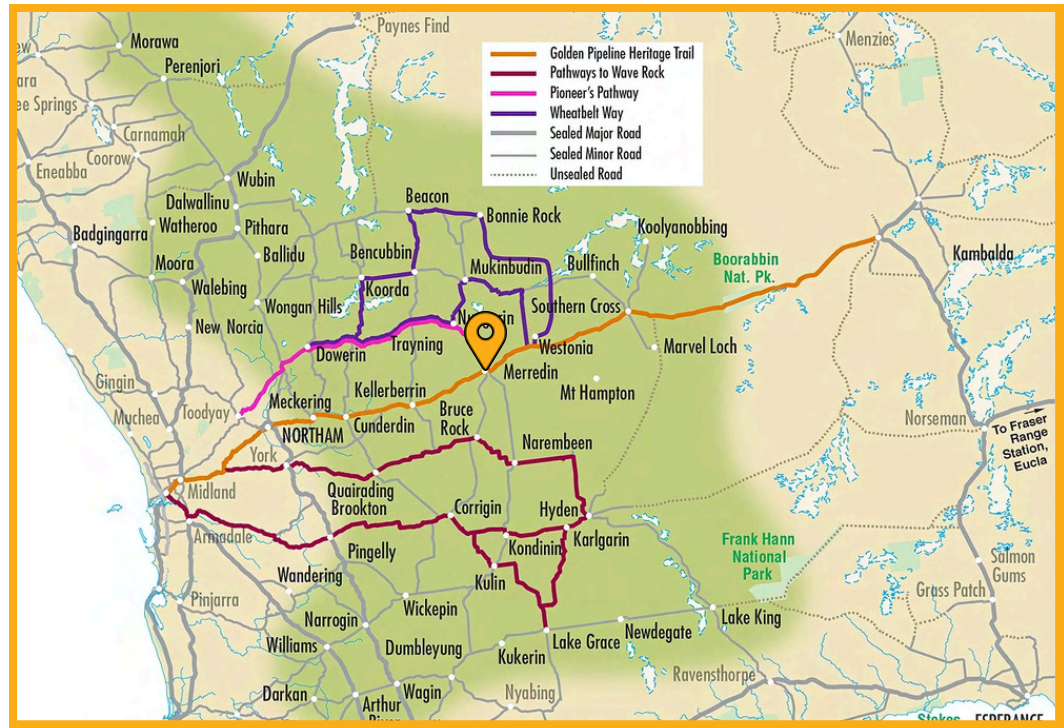


A Wheatbelt Escape Awaits

DIRECTIONS TO YOUR Wheatbelt Getaway

The Shire is known for its excellent transport links, with around 2,250 vehicles passing through via the Great Eastern Highway daily and regular services by the Transwa Prospector Train and Merredin Link, ensuring the town is accessible by road and rail.

For a direct route, simply follow the Great Eastern Highway towards Kalgoorlie for 257kms. For a more scenic journey and to avoid traffic, consider alternative routes through York (271kms) or follow the Pioneers Pathway from Toodyay to Merredin (314kms).



DAY ONE - Friday

LATE MORNING

As you conclude your morning trip into Merredin, make your first stop at the impressive CBH Silos - one of Merredin's most iconic landmarks. These silos serve as a canvas for a striking mural by artist Kyle Hughes-Odgers that was inspired by the local landscape and community. Painted in August 2017, this artwork came to life in just 14 days, with an astounding 168 hours of hard work, 200 liters of paint, two lifts, 80 rollers, and 10 brushes. Make sure you have your camera handy to capture the perfect snap!



LUNCH

WILD POPPY CAFE

Kick off your stay in Merredin by heading to Wild Poppy Cafe, a popular local spot for lunch. Choose something delicious from the lunch menu, or see their display for a range of homemade cakes, rolls, quiches, and tarts. Vegan and gluten-free options are available



AFTERNOON

After a delicious lunch, head to the Central Wheatbelt Visitor Centre and speak to the lovely staff for all the maps and information you'll need for your weekend, or browse the retail shop which stocks a wide range of local handmade products, produce, souvenirs, natural history and historical publications.



HERITAGE WALK

Stretch your legs and immerse yourself in Merredin's rich history with the CBD Heritage Walk. Starting at the Railway & Military Museum precinct, this self-guided trail weaves through the heart of town, unveiling stories of Merredin's past through its beautifully preserved buildings and historical landmarks.



During the heritage walk, stop in at Cummins Theatre, a beautifully preserved heritage venue dating back to 1928, and hear stories of its colourful history and Alice the ghost!



AFTERNOON (Continued)

Conclude your CBD Heritage Walk at Roy Little Park, a peaceful and relaxing location. With its lush greenery, shaded spots, and gentle water features, it's the perfect place to relax and recharge. Take a seat by the pond and enjoy the company of the park's friendly local ducks. Bring some bird-friendly feed and watch as they waddle over to say hello!

MERREDIN CINEMA AND CAFE

This cozy venue offers more than just the latest films; it also doubles as a café and dining spot, making it an ideal place to unwind with a delicious meal or snack before enjoying an afternoon movie in an air-conditioned theatre.

MERREDIN TOURIST PARK

Check in to your fully equipped chalet at the Merredin Tourist Park any time after 3:00PM. Perfect for those seeking comfort with a touch of adventure, each chalet is equipped with everything you need for a relaxing stay including comfortable queen size beds, fully-equipped kitchens, air conditioning and more!

DINNER

MJ'S FOOD AND COFFEE

End your evening with a delicious meal from MJ's Food Truck! Head down to Barrack Street for a tasty takeaway, or enjoy the convenience of having it delivered straight to your door. Either way, you're in for a hearty, satisfying meal to cap off your first night in Merredin.

Review

“Passed through Merredin looking for a feed and we are so pleased to stumble on your little food van. Got ourselves a steak burger and double cheeseburger and they were fantastic! Highly recommend to anyone passing through looking for a good feed”





📷 Australia's Golden Outback



📷 Australia's Golden Outback

DAY TWO - Saturday

BREAKFAST

DIMENSIONS CAFE

Start your day with a visit to Dimensions Café, located in the historic Postmasters Building in the heart of Merredin's CBD. Indulge in a delicious selection of homemade dishes and sip on premium WA Rubra coffee, all while enjoying the cozy ambiance of the indoor rooms or the serene outdoor garden. It's the perfect spot to relax and savour a freshly made breakfast before continuing your adventures.

MORNING

TOTADGIN CONSERVATION PARK

Located just 14km south-west of Merredin, Totadgin Conservation Park provides an ideal location to discover much of the native flora and fauna inhabiting the area. Take a gentle stroll along the bottom of the Totadgin Rock, which is a granite outcrop with a similar wave formation to Wave Rock in Hyden, or discover the plethora of native birds that live in the reserve, including the White-eared Honeyeater and Chestnut-rumped Thornbill.



On your way to Totadgin Conservation Park, keep an eye out for WA's largest operating solar farm!



MORNING (Continued)

DESERT EAGLE HELICOPTERS

Take your Merredin adventure to new heights with a breathtaking 30-minute charter flight over the golden wheatfields, vibrant canola blooms, and striking granite outcrops. With Desert Eagle Helicopters, you'll experience the Wheatbelt like never before, soaring above its vast landscapes, taking in sweeping panoramic views, and capturing incredible aerial photos. Whether you're a thrill-seeker or simply looking for a unique way to appreciate the region's beauty, this unforgettable flight is a must-do!



LUNCH

MERREDIN FRENCH HOT BREAD

No visit to Merredin is complete without a stop at the Merredin French Hot Bread bakery. After your incredible helicopter adventure, head back into town and visit the famous Merredin French Hot Bread bakery, known for its freshly baked bread, flaky pastries, and mouthwatering pies. Whether you're after a buttery croissant, a decadent doughnut, or a delicious cake or slice, this bakery is the perfect place to grab a delicious treat.

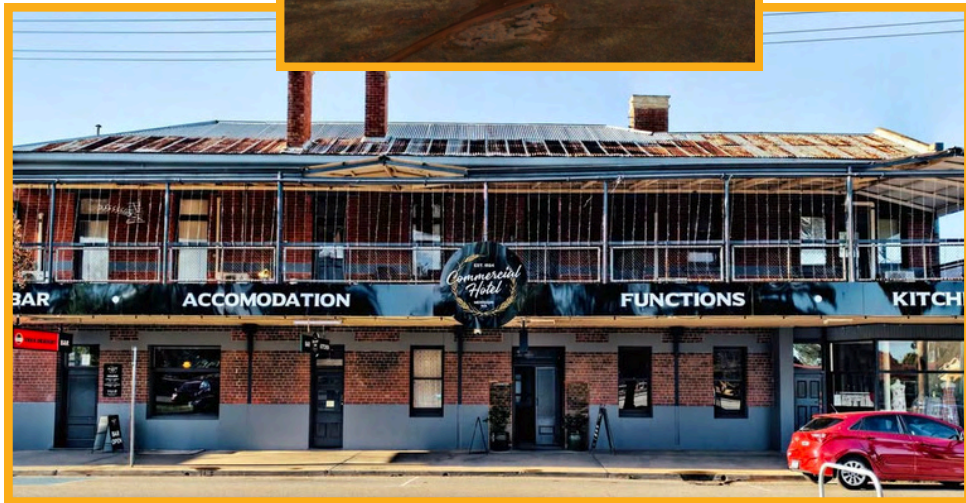
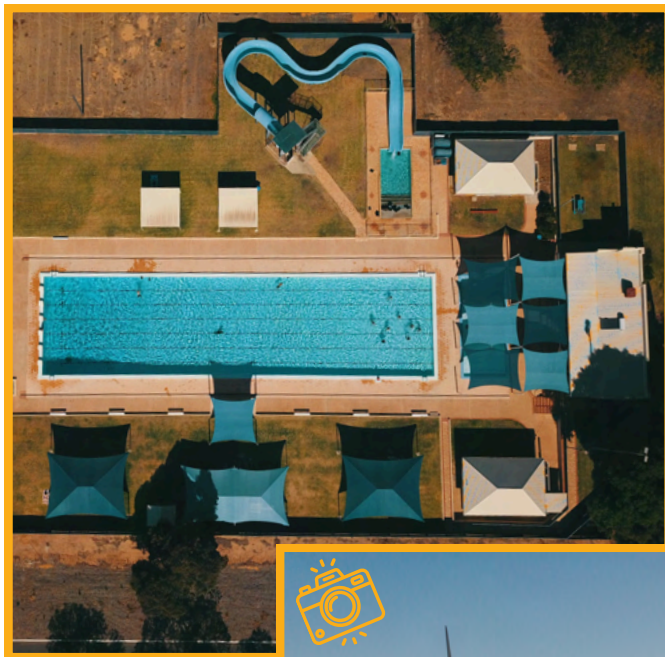


AFTERNOON

ART AND CRAFT WORKSHOP - PAINT THE TOWN WA

Get hands-on and explore your artistic side with a fun and inspiring workshop with Paint the Town WA! Whether you're in the mood for a relaxing Paint & Sip session, crafting a stunning resin slate platter or cheeseboard, or mastering the art of macramé, there's something for everyone to enjoy. With plenty of creative experiences on offer, it's the perfect way to unwind, try something new, and take home your own handmade masterpiece!





After your workshop, take a well-earned dip to refresh and unwind. If you're staying at the Merredin Tourist Park, enjoy a relaxing swim in the on-site pool. Visiting Merredin during pool season (November–March) Head to the Merredin District Olympic Swimming Pool, where you'll find a 50m lap pool, a toddler pool, a thrilling water slide, and a fun splash pool. With plenty of shaded grassy areas to relax, it's the perfect way to cool off and soak up the Merredin sunshine!



Visit Scott Road, just near Collgar Wind Farm, during wildflower season (August - October) to see an abundance of vibrant wildflowers!



COLLGAR WIND FARM

End your day's adventures with a spectacular sunset at Collgar Wind Farm, the largest wind farm in WA. As the sun dips below the horizon, watch the landscape glow in deep shades of orange and pink, creating the perfect backdrop for a peaceful evening. Don't forget your camera as this is one sunset you'll want to remember!

DINNER

THE COMMERCIAL HOTEL

For a relaxed and welcoming dining experience, head to The Commercial Hotel, Merredin's go-to spot for a great meal and a fun night out. Open seven days a week, this family-friendly venue offers delicious pub classics, refreshing drinks, and a warm atmosphere perfect for enjoying a meal with loved ones. Gluten free and Vegan options available.

Review

“

Took the family out for dinner here as we are overnighing in Merredin. Food was excellent and service efficient and friendly! Will definitely return ★★★★★

DAY THREE - *Sunday*

MORNING

MERREDIN PEAK AND NATURE TRAIL

Kickstart your day with a scenic morning hike up Merredin Peak, the highest peak in the area, following the nature trail that winds through rugged bushland before leading you to the summit of the granite rock. As the sun rises, take in the breathtaking panoramic views of the Wheatbelt stretching as far as the eye can see, with the landscape glowing in hues of orange and gold.

Continue your journey down to Railway Dam, a historic water catchment built in the late 1800s to supply steam trains crossing the region. Here, you'll find shaded picnic spots, making it the perfect place to enjoy a well-earned breakfast surrounded by nature. A peaceful and rewarding start to your day!

NJAKI NJAKI ABORIGINAL CULTURAL TOUR

After breakfast, embark on a deeply immersive cultural experience with Njaki Njaki Traditional Owner and Aboriginal tour guide Mick. Journey along the trails of Merredin Peak Reserve. Be captivated by the Moulyk Dreaming Tour, which shares the story of the creator who shaped the landscape you see today. To complete the experience, you'll also have the unique opportunity to try bush tucker, tasting the traditional foods that have sustained Aboriginal people for generations. A truly unforgettable way to connect with the ancient stories and flavours of the Wheatbelt.



Toilet facilities are available on the Reserve, but there are no water stations - so be sure to bring a water bottle to stay hydrated during your visit!





LUNCH

MERREDIN PIZZA SHOP

After a morning of exploring, refuel with a delicious meal from Merredin Pizza, where you'll find piping hot pizzas loaded with toppings, tasty sides, juicy hamburgers, and classic fish and chips. With kid-friendly options available, there's something for everyone to enjoy!

AFTERNOON

APEX PARK | DANJOO WAABININY BOODJA

Once you've got your meal, take it to Apex Park | Danjoo Waabininy Boodja, where you can unwind under the shaded picnic areas and enjoy the peaceful surroundings. With plenty of seating and a beautiful natural setting, it's the perfect place to recharge, and soak in the fresh country air.

Wrap up your Merredin adventure with some hands-on fun with the kids at Apex Park | Danjoo Waabininy Boodja! Whether you're shooting hoops together on the half basketball and soccer court, cheering them on as they master tricks at the skate park's skate bowl, following them down the 11-metre-high slide tower, or racing them on the flying fox, there's something for everyone to enjoy.

If you're after a more laid-back afternoon, join in on a friendly game on the grassed oval, or simply soak up the sun while watching the kids run and play. It's the perfect way to end your stay, making memories with the whole family before heading home!



 Australia's Golden Outback



This new park has a range of facilities including modern toilets, BBQs, and drinking fountains.

*For more information about Merredin accommodation,
food options, and things to do, head to
www.wheatbelttourism.com.au.*



**CENTRAL WHEATBELT
VISITOR CENTRE**

📍 45 Barrack Street, Merredin
☎ (08) 9041 1666
✉ visitor@merredin.wa.gov.au