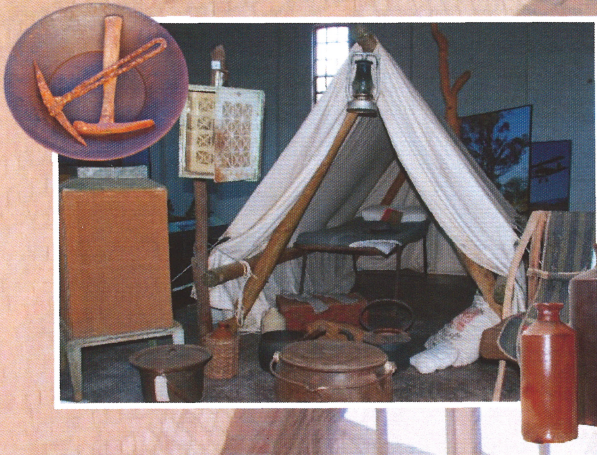


Where do Earthquakes, Farming, Gold, Vintage Machinery, the 10th Light Horse Brigade and Rail History all come together?

Right here at Cunderdin Museum, your window to the wheatbelt!



**CAPTURE** the spirit of the goldrush and the hardships of life on the land.



**EXPLORE** our large collection of vintage farm machinery



**RELIVE** a bygone era of rail in the lovingly restored, original 1950's Dining Car



Photo courtesy of DANJAAVOO IMAGERY

**EXPERIENCE** W.A.'s most devastating earthquake with our interactive display and simulator.



# CUNDERDIN MUSEUM

Your window to the wheatbelt!



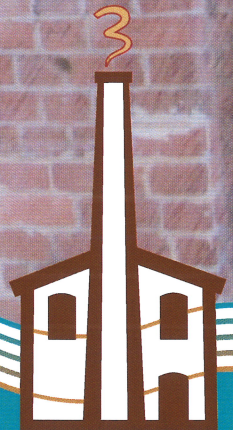
100 Forrest Street, Cunderdin  
WESTERN AUSTRALIA 6407

**Phone /Fax:** (08) 9635 1291

**Email:** [museum@cunderdin.wa.gov.au](mailto:museum@cunderdin.wa.gov.au)

Open Daily 10.00am - 4.00pm

Small Admission Fee

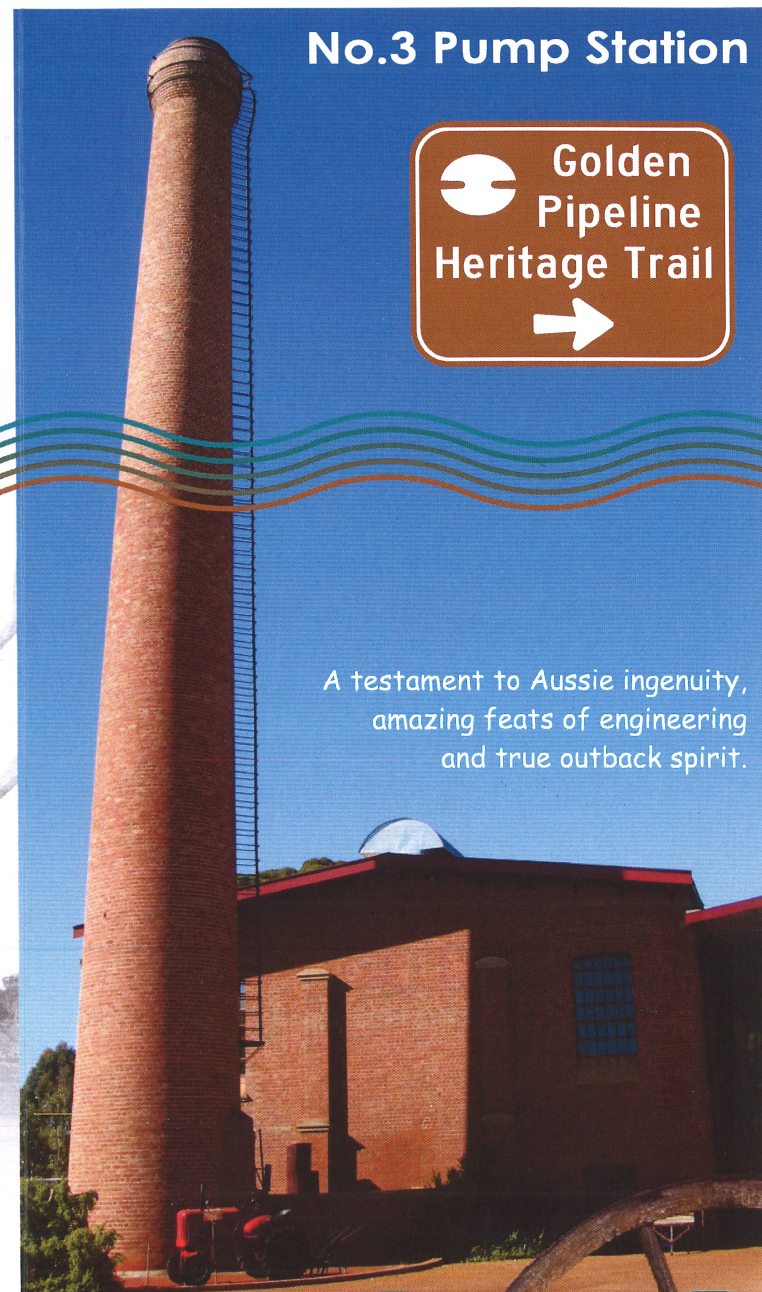


Vintage Machinery • Golden Pipeline • Meckering Earthquake • Farming & Wool • Goldfields Railway

Vested in the Shire of Cunderdin  
and the National Trust of Australia (WA)

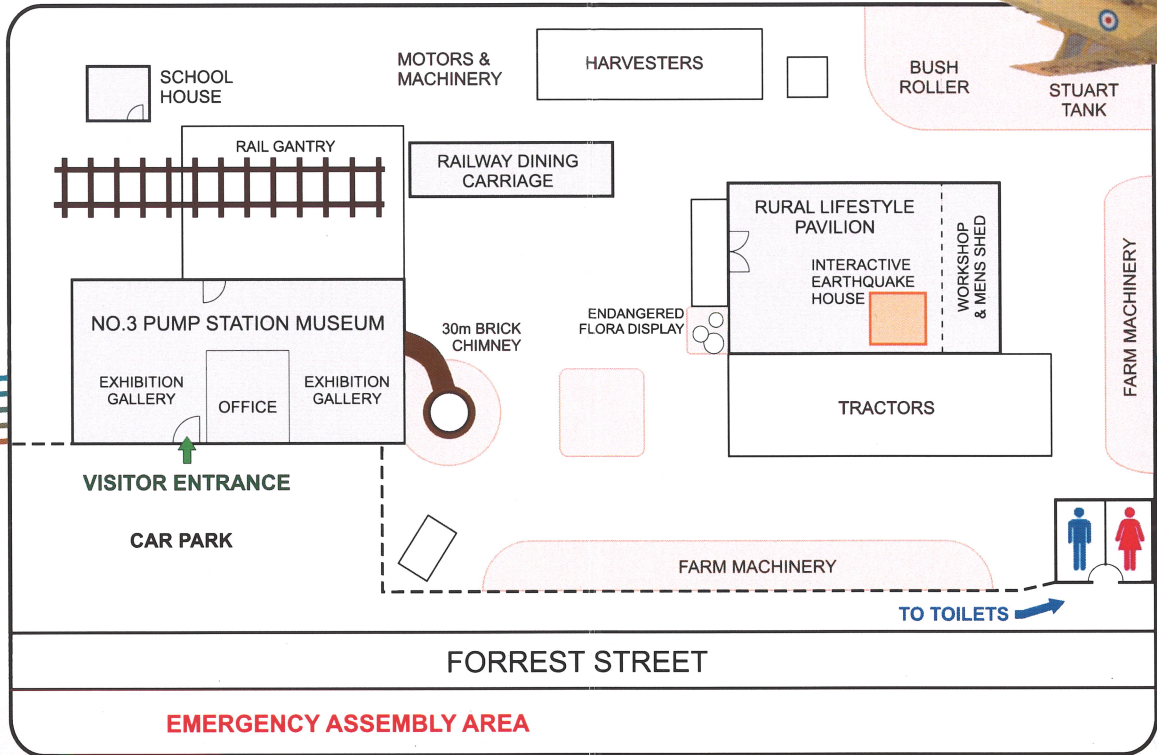
# CUNDERDIN MUSEUM

## No.3 Pump Station

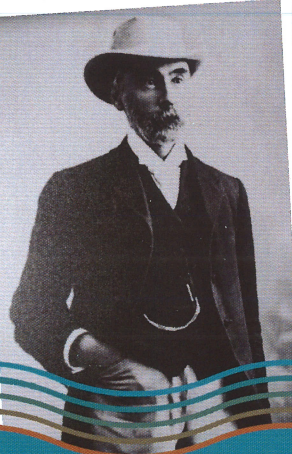


A testament to Aussie ingenuity,  
amazing feats of engineering  
and true outback spirit.

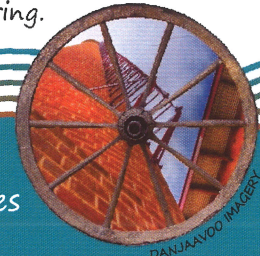
Discover Cunderdin's war-time contributions & the 10th Light Horse Brigade



Pump Station No.3 on the Golden Pipeline Heritage Trail was built in 1902 to house the original steam engines and boilers used to pump water from Mundaring Weir to the goldfields of Kalgoorlie. Engineered by C.Y. O'Connor (pictured left), this project is still considered one of Australia's greatest feats of engineering.



Exhibition Galleries • Rural Lifestyle Pavilion • Old Schoolhouse • Military Machines



DANJAAYOO IMAGERY