



Visitor Guide and Map



Sunset – Askew Lake, Beacon



Echidna – Beacon



Datjoin Rock – Beacon



Pergandes Homestead – Bencubbin



Mt Marshall Community Nursery



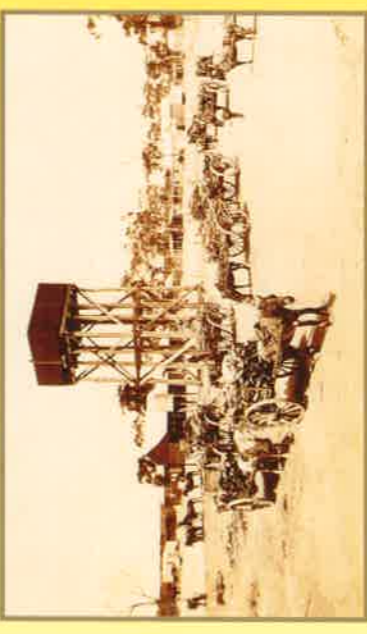
Sandalwood Shops – Bencubbin



Marshall Rock – Bencubbin



Farming Photo – courtesy of Rachel Kirby



The area is now primarily wheat, coarse grain, cattle and sheep farming. There are many points of interest, all serviced by the two main centres, Bencubbin and Beacon.

In September and November of 1836 the surveyor General Captain John Septimus Roe led a 40-day expedition out into the unknown east of the settled districts of the Avon Valley. Marshall Rock and Lake McDermott were named after Captain Marshall McDermott, an early settler to the Swan River Colony.

Sandalwooders and Graziers were the first European settlers in the Mt Marshall area. The first grazing lease was taken up in 1868. Sandalwood was removed from this area from the 1880's through to the 1920's. Permanent settlement and development of the land for farms commenced around 1910.

History Mt Marshall

Town Services

Meals / Snacks

Bencubbin

Beacon Country Club

(08) 9686 1030

Monday 5.00pm-9.00pm

Tuesday to Friday 5.00pm-11.00pm

Saturday 12.00pm-2.00pm & 5.00pm-12.00am

Sunday 11.30am-1.30pm & 4.30pm-8.30pm

Beacon Co-Op

(08) 9686 1057

Weekdays 8.30am-5.00pm

Saturday 8.30am-12.00pm

(Apr-Sept 8.00am-11.00am)

Old Beacon Bakehouse Café

Contact Beacon Visitor Centre for opening hours

Bencubbin

Bencubbin Hotel

(08) 9685 1201

Sunday to Wednesday 3.30pm-9.30

Thursday to Saturday 3.30pm-12.00am

Country Tarts Café

(08) 9685 1165

Tuesday to Wednesday 10.00am-1.30pm

Thursday to Friday 10.00am-2.30pm

Benny Mart

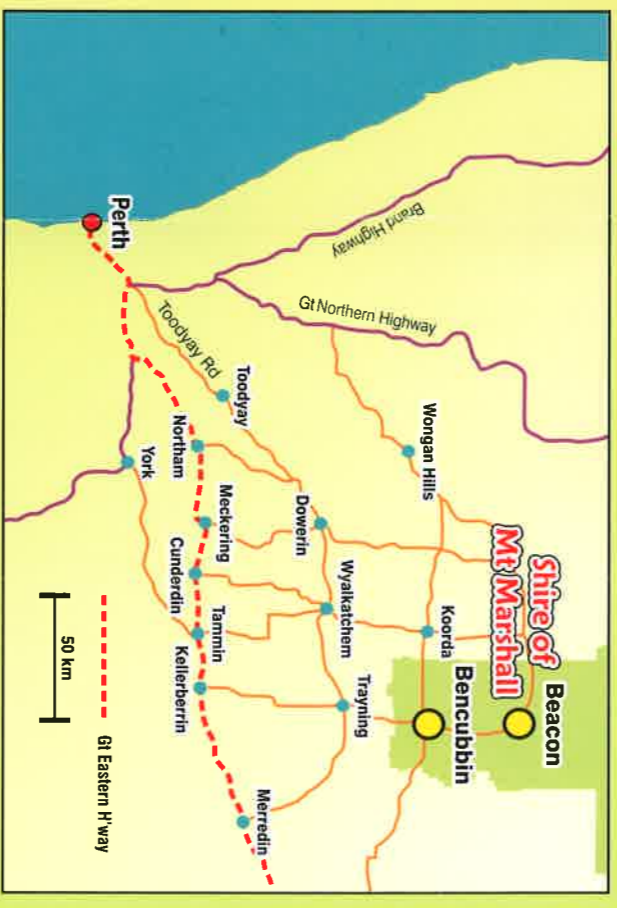
(08) 9685 1442

Monday to Friday 8.30am-6.00pm

Saturday 9.00am-12.00noon

Sunday 10.00am-12.00noon

NB. Business hours are subject to change



Telecommunications

Only CDMA and Next G mobile phone coverage is available in some but not all areas of the Shire.



Beacon Visitor Centre (Telecentre)

Phone: (08) 9686 1014

Tuesdays and Thursdays 9.00am-4.00pm

Wednesdays and Fridays 9.00am-3.00pm

Bencubbin Visitor Centre (Shire Office)

Phone: (08) 9685 1202

Monday to Friday 8.30am-5.00pm

Fuel

Bencubbin

Ninghan Spraying & Ag Services

(08) 9686 1092

Monday to Friday 7.30am-5.30pm

Saturdays 7.30am-12.00pm

No Eftpos facilities or gas available.

Bencubbin

Bencubbin Hardware and Agencies

(08) 9685 1092

Monday to Friday 9.00am-5.00pm

Saturdays from 9.00am-11.00am

Sovereign and BP fuel card facilities available.

Eftpos available.

No Gas.



Accommodation

Beacon

Beacon Caravan Park

Conveniently located opposite the Tourist Information Bay. Powered and unpowered sites as well as three fully furnished on site cabins. Phone: (08) 9685 1202 during office hours for enquiries

Beacon Railway Barracks

Budget style accommodation. Phone: (08) 9685 1202 during office hours for enquiries

Bencubbin

Bencubbin Caravan Park

Close to the town. Offers both powered and unpowered sites as well as two fully furnished on site cabins. Contact the Shire of Mt Marshall for bookings and further enquiries. Sewage Dump facilities available. Phone: (08) 9685 1202 during office hours for enquiries and bookings.

Bencubbin Hotel

Provides well priced accommodation. Monger Street Bencubbin. Phone (08) 9685 1201

Beacon Town Services

Beacon Garage (08) 9686 1056

Beacon Panel and Paint (08) 9686 1010

Beacon Silver Chain (08) 9686 1020

Beacon Telecentre (08) 9686 1014

Ninghan Spraying & Ag Services (08) 9686 1092

Bencubbin Town Services

Bencubbin Police (08) 9685 1220

Bencubbin Silver Chain (08) 9685 1229

Bencubbin Smash Repairs (08) 9685 1125

Bencubbin Telecentre (08) 9685 1007

Bencubbin Truck and Autos (08) 9685 1313

Emergencies (000)

or Bencubbin Police Station (08) 9685 1220

Granite Outcrops

Billburning Rock

Inside the Billburning Reserve this outcrop provides excellent views of both cropping and pastoral country. The reserve displays its beauty in Spring with masses of wildflowers. The outcrop is also the location of a pioneer well and a Gnamma Hole.



Marshall Rock

First written about in 1836, Marshall Rock provides 360 degree views of productive cropping land. Great display of wildflowers on the reserve and a perfect location for a picnic.



Beagley's Breakaway

A spectacular example of this rock formation dating back millions of years, one of a number of crumbling remnants of the protective capping of this ancient landscape, widespread throughout the district. This breakaway adjoins Tampu Well Reserve. This area is private property and you are asked to respect the owner's property, fences and roads. Please keep to breakaway reserve area and farm tracks. Camp fires are only permitted between the months of April to Sept. No pets, no shooting. Please take your rubbish with you. Ring Beacon Telecentre 96861014 or Mr Beagley 96861012 for permission to camp. There are no services



at this rock. Nearest services are in Beacon.

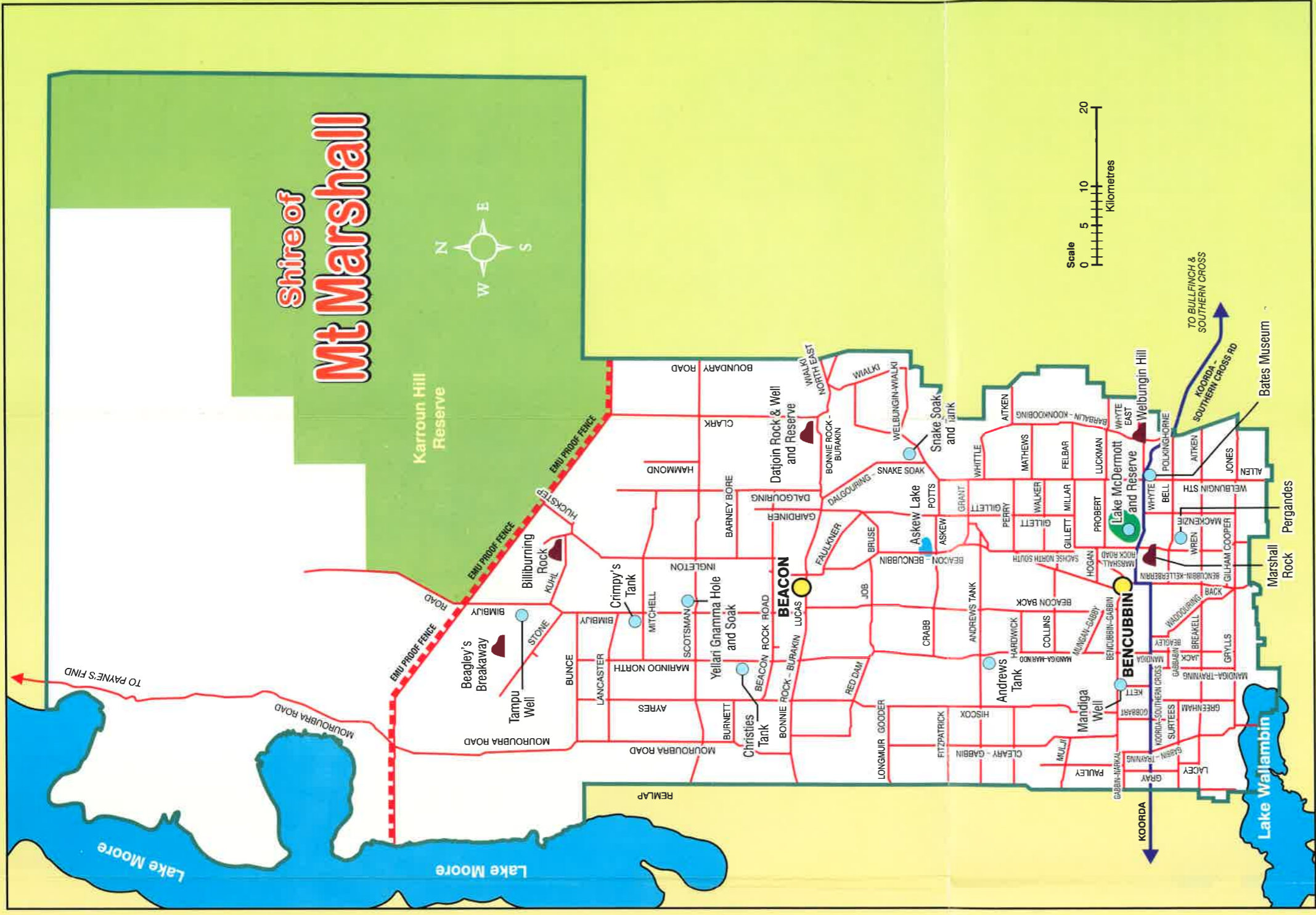
Pioneer Wells

Local wells were the only means by which early settlers were able to remain on the land until the pipelines from the Mundaring Weir were established throughout the Shire. A trip back in time sees the observer imagining how families carted water from these sites for their stock and personal use.



Pergandes

See a display of settlers craftsmanship and innovation. The Pergandes Family settled in the Mt Marshall area in 1910. The Family homestead and sheep yards are made entirely from granite taken from nearby rock. The thin granite slabs for the sheep yards were obtained by a process of firing and rapid cooling with water on the rock surface. This historic area gives an interesting insight into how early settlers made use of their surrounding landscapes when building their properties.



Salt Lakes

Within the Shire there are many Salt Lakes of different sizes and salinities. Depending on the season the water level of the lakes can vary. Some of the lakes in the Shire include, Lake Moore, Askew, McDermott, Mollerin and Wallambin.

Museums

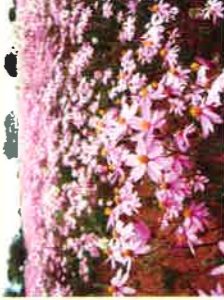
There are three very interesting museums within the Shire of Mt Marshall.
Bates Museum – Don't miss a captivating visit to Norm Bates' historical museum, filled with rare and unusual articles from times gone by. Attractions include vintage farm machinery and tractors – some of which have been fully restored. With everything from leather dog shoes and camel saddles to an old hospital operating table and farm homestead memorabilia. Bates Museum is definitely worth the 10km trip south of Bencubbin. Museum visits are by appointment only – Contact Norm Bates on (08) 9685 1242.

Beacon Museum – Located at rear of the Old Beacon Bake House Building. The museum is full of historical items and photos that illustrate the history of Beacon's industries, events, buildings and people.

Bencubbin Museum – Located in the original Police Station Building the Museum has a range of historical items that outline the history of the Shire. The key focuses of the museum are industries, events, buildings, laws and legislations, police and people. Contact the Shire Office on (08) 9685 1202 to visit the museum.

Wildflowers

When favourable seasonal conditions prevail and good winter rains are experienced, the district blooms with wildflowers. Many people travel from Beacon North along Mouroubra Road to Payne's Find to photograph or just walk amongst the wildflowers when they are blooming, usually late August through to October. Current road conditions along Mouroubra Rd to Payne's Find can be obtained by calling the Shire Office on (08) 9685 1202.



Shire of Mt Marshall
Proud Partners of

NEWROC